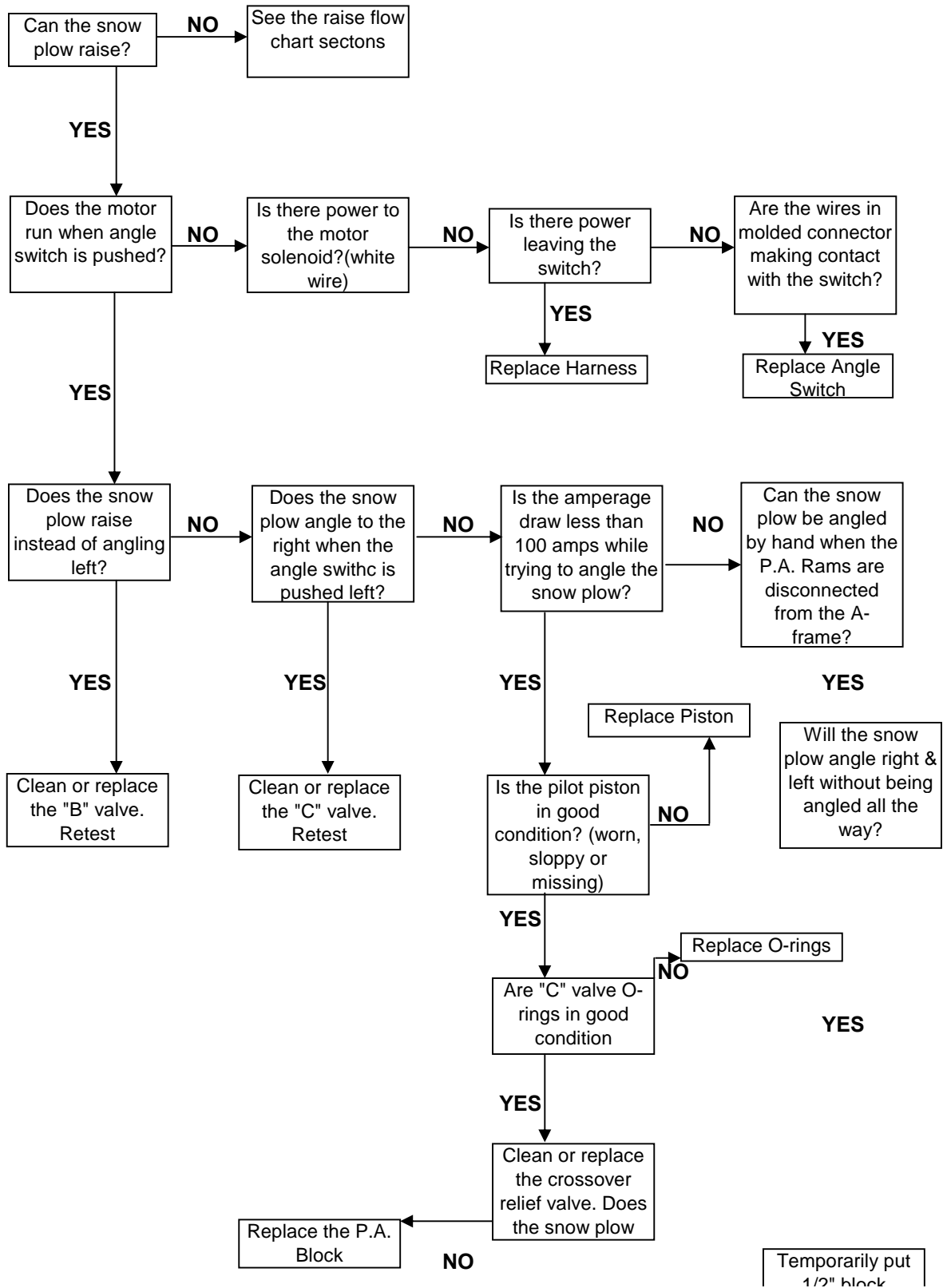


SNOW PLOW WILL NOT ANGLE



SNOW PLOW WILL NOT ANGLE

1/2" block
between the
sector & A-frame
to limit the degree
of angle. Will the
snow plow angle
now?

YES

Weld 1 1/2" x 1
1/2" x 1/2"
spacers to the A
frame stops

SNOW PLOW WILL NOT ANGLE

in
ctor
act
h?

gle

ow
led
r the
are
ed
t-

NO

Relieve the
interference
between the
Sector & A-frame

e snow
le right &
out being
l all the
y?

NO

Does the
pressure
remain in
angle hose
when the
motor is not
running?

YES

If both hoses are
stiff, inspect the
Pilot Check,
Piston & "C"
valve for binding

If one hose is stiff
inspect the "C"
valve for binding,
replace coupler
sets

ily put
ack

SNOW PLOW WILL NOT ANGLE

Check
the
A-frame
degree
Will the
angle
2

YES

NO

Replace both the
coupler sets, & or
clean or replace
the "C" valve.

Use 1 1/2" x 1
1/2" x 1/2"
washers to the A-
frame stops